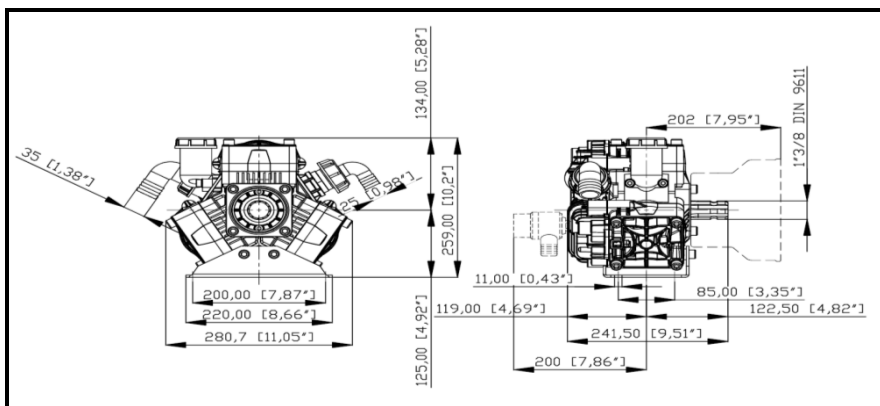
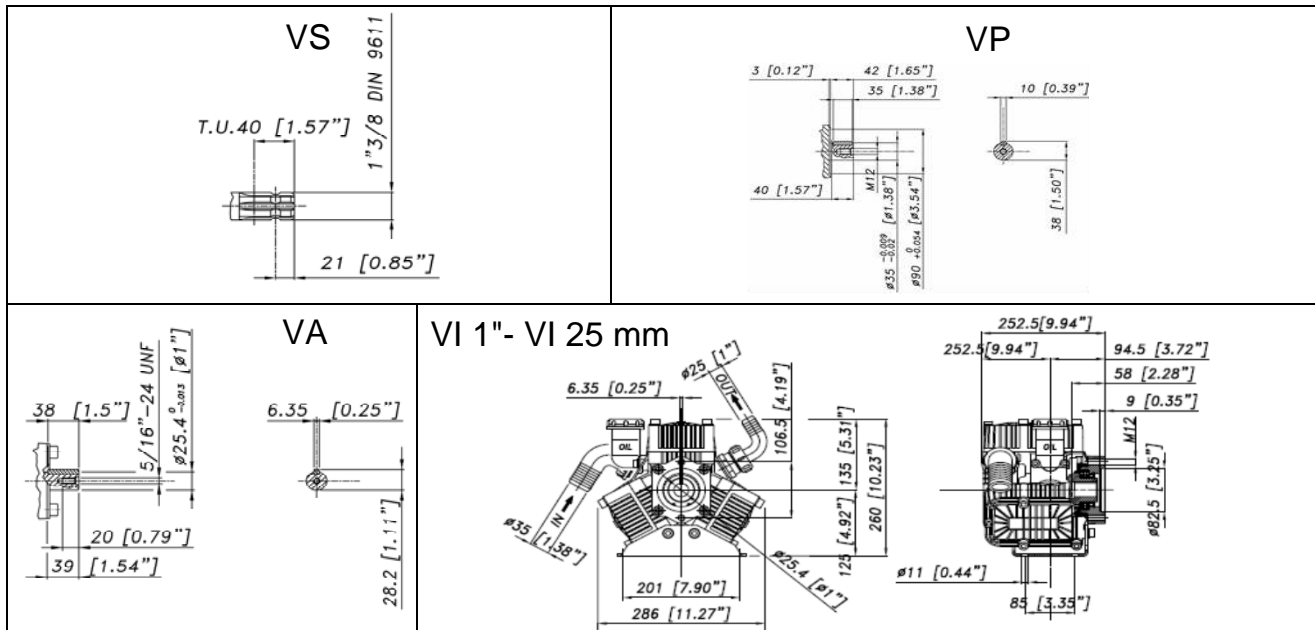


# POLY 2085 PREMIUM VS - VP - VA - VI

## DIMENSIONI D'INGOMBRO - OVERALL DIMENSIONS



## ALBERO POMPA - PUMP SHAFT



COPPIA DI SERRAGGIO - TORQUE CHART				
CODICE - CODE	Q.TY	POS	N-m	Lbr.ft
63.9808.97.3	3	3	25	18,5
83.5089.00.2	1	43	20	14,8
85.2585.00.2	3	47	5 (LOXEAL 55-14)	3,7 (LOXEAL 55-14)
86.2684.00.2	2	24	5	3,7
86.2914.00.2	9	37	10	7,4
86.3187.05.2	4	17	44	32,5
86.1820.76.2	6	36	3	2,2
86.3265.50.2	3	11	44	32,5
86.3348.05.2	4	64	44	32,5
86.3694.65.2	1	75	40	29,5
86.3562.50.2	12	28	30	22

Tolleranza di serraggio: 0/-10%  
Tolerance on torque value:

INFORMAZIONI UTILI USEFUL INFORMATION				
LUBRIFICANTE- LUBRICANT: OLIO MOTORE O SEMIDRAULICO SAE 30 MOTOR OIL OR SEMI-HYDRAULIC OIL SAE 30				
PRESSIONE ACCUMULATORE ACCUMULATOR PRESSURE				
PRESSIONE DI LAVORO - OPERATING PRESSURE	2 ÷ 5	5÷10	10 ÷ 20	20 ÷ 50
ACCUMULATORE ACCUMULATOR	/	/	/	/

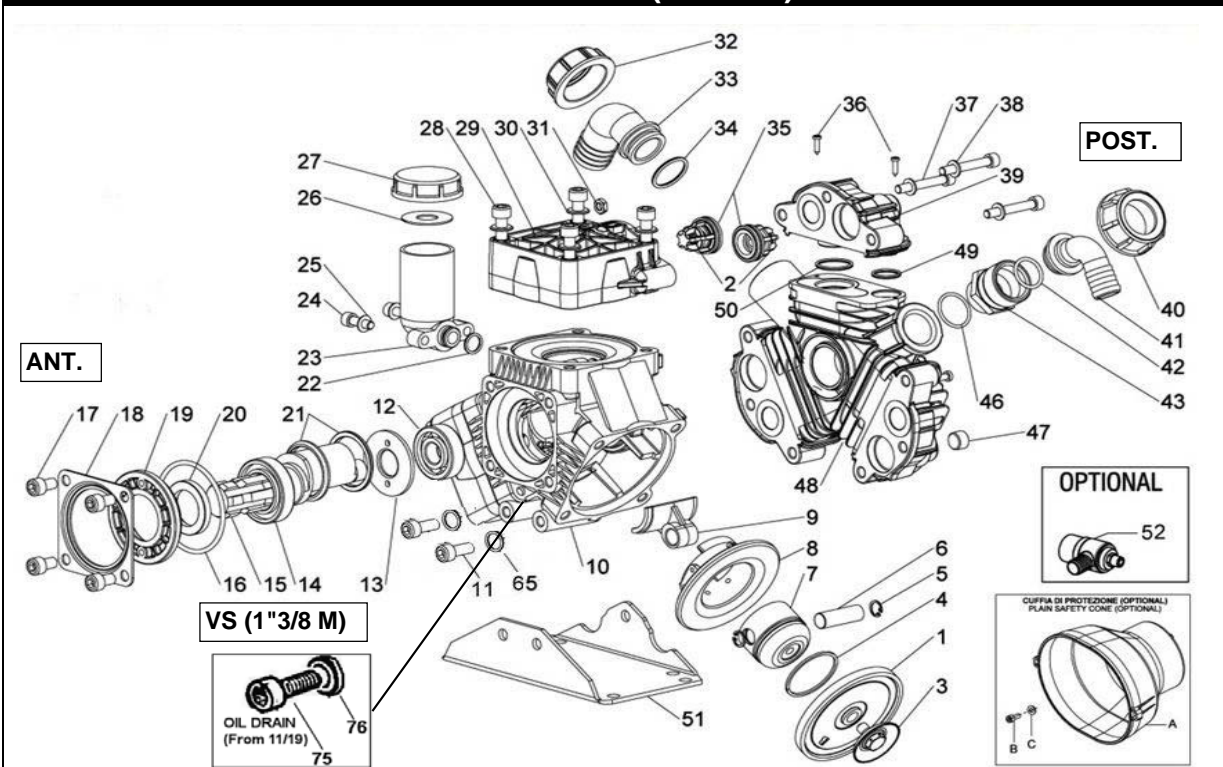
## KIT MEMBRANE - DIAPHRAGMS KIT

KIT	63.9809.97.3	BUNA - N		63.9810.97.3DS	DURAMAX PRE-SET		63.9810.97.3	DESMOPAN PRE-SET		63.9811.97.3	VITON					63.9812.97.3	PENTAX	
		1	35		1	2		1	2		1	35	46	49	50		1	35
POSIZIONE ESPLOSO POSITION NUMBER																		
QUANTITA' NEL KIT QUANTITIES INCLUDED		3	6		3	6		3	6		3	6	1	3	3		3	6

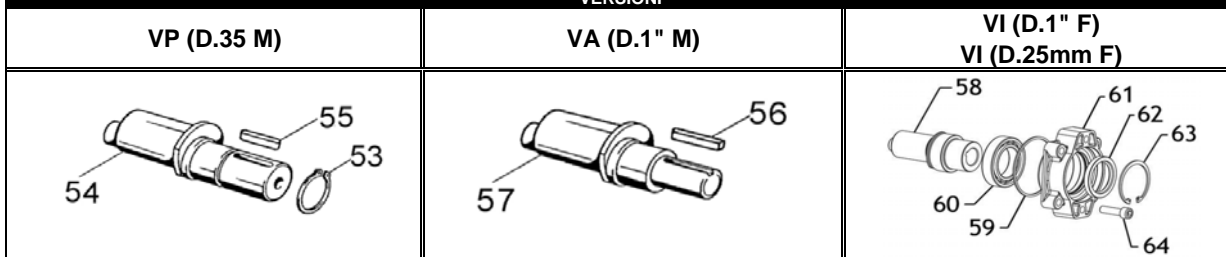
## KIT POMPA/KIT VALVOLE - PUMP KIT/VALVES KIT

KIT	63.9813.97.3	KIT POMPA PUMP KIT			63.9814.97.3	KIT POMPA VI VI PUMP KIT			63.9816.97.3	KIT VALVOLE VALVES KIT						
		16	20	35		59	62	35		2	35					
POSIZIONE ESPLOSO POSITION NUMBER																
QUANTITA' NEL KIT QUANTITIES INCLUDED		1	1	6		1	1	6		6	6					

# POLY 2085 PREMIUM VS - VP - VA - VI (1"3/8 M)



## VERSIONI



POS.	CODICE PART NO. REF.	DENOMINAZIONE - DESCRIPTION - DESCRIPTION	Q.TY	POS.	CODICE PART NO. REF.	DENOMINAZIONE - DESCRIPTION - DESCRIPTION	Q.TY
1	95.0040.31.2	BUNA PISTON DIAPHRAGM	3	32	82.0070.00.2	WING NUT G.1"1/2	1
1	95.0040.33.2	VITON PISTON DIAPHRAGM	3	33	84.0570.00.2	90° ELBOW CONNECTOR DIA.35-1,37"	1
1	95.0040.00.A	PRE-SET DESMOPAN PISTON DIAPHRAGM	3	33	84.0561.00.2	90° ELBOW CONNECTOR DIA.30-1,18" (OPT.)	1
1	95.0040.00.ADS	PRE-SET DURAMAX PISTON DIAPHRAGM	3	33	84.0566.00.2	90° ELBOW CONNECTOR DIA.2-1,25" (OPT.)	1
1	95.0040.36.2	HPS PISTON DIAPHRAGM	3	33	84.0571.00.2	90° ELBOW CONNECTOR DIA.38-1,49" (OPT.)	1
2	23.9906.97.3	VALVE ASSY	6	33	84.0591.00.2	90° ELBOW CONNECTOR DIA.40-1,57" (OPT.)	1
3	63.9808.97.3	KIT SCREW/DISK	3	34	80.3219.15.2	O-RING DIA.3,0x30 VITON	1
4	81.8504.50.2	PISTON RING	3	35	80.3247.60.2	O-RING DIA.3,53X28,17	6
5	80.0021.00.2	RING D.15	6	36	86.1820.76.2	SCREW DIA.3,5X16	6
6	85.2006.70.2	PISTON PIND.15x46	3	37	86.2914.00.2	SCREW M8X55 UNI5931	9
7	63.0132.09.2	PISTON	3	38	84.3685.40.2	WASHER DIA.8,2x15x1,5	9
8	63.0015.01.2	PISTON SLEEVE	3	39	63.0129.32.2	VALVES CONNECTOR 3/8"	3
9	23.0005.09.2	LIGHT ALLOY CONROD	3	40	82.0067.50.2	WING NUT G.1"1/4	1
9	23.0045.11.2	BRONZE CONROD (OPTIONAL)	3	41	84.0542.40.2	90° ELBOW CONNECTOR DIA.25-1"	1
10	63.0001.09.2	CRANKCASE	1	42	80.3219.05.2	O-RING 3,0x25 VITON	1
11	86.3265.50.2	SCREW M10x25 UNI5931	3	43	83.5089.50.2	NIPPLESG.1"-G.1"1/4	1
12	81.2646.00.2	BEARING DIA.20X52X15	1	46	80.3207.50.2	O-RING 2.62x29.82	1
13	95.0097.61.2	CRANKSHAFT SPACER	1	47	85.2585.00.2	CAP G.3/8	3
14	81.2837.00.2	BEARING DIA.35X62X14	1	48	63.0130.32.2	MANIFOLD	1
15	63.0009.26.2	CRANKSHAFT "VS"	1	49	80.3217.45.2	O-RING DIA.3X18	3
16	80.3310.00.2	O-RING 4,0x82	1	50	80.3206.50.2	O-RING DIA. 2.62X28,25	3
17	86.3187.05.2	SCREW M10x16 UNI5931	4	51	63.0135.61.2	MOUNTING RAIL	1
18	17.0016.61.2	COVER	1	52	24.3016.97.3	SAFETY VALVE 15BAR (OPTIONAL)	1
19	53.0007.32.2	HOUSING	1	53	80.1264.00.2	RING D.35	1
20	80.2143.10.2	OIL SEAL DIA.35X52X7	1	54	63.0011.26.2	CRANKSHAFT "VP"	1
21	26.0047.76.2	RING	2	55	80.6578.00.2	TAB 10x8x35 "VP"	1
22	80.3180.00.2	O-RING 2,62x15,08	1	56	63.0016.26.2	CRANKSHAFT "VA"	1
23	23.0008.32.2	OIL FILLER	1	57	80.6475.00.2	TAB 6,36x6,36x40 "VA"	1
24	86.2684.00.2	SCREW M8x25 UNI5931	2	58	63.0127.26.2	CRANKSHAFT "VI" D.1"	1
25	84.3685.40.2	WASHER D.8,2x15x1,5	2	58	63.0127.26.2A	CRANKSHAFT "VI" D.25mm	1
26	82.4120.00.2	GASKET DIA.19x45x1,5 (before 08/2020)	1	59	80.3287.00.2	O-RING 3,53x82,14	1
26	23.0097.31.2	OIL FILLER MEMBRANE (from 09/2020)	1	60	81.2933.00.2	BEARING 45X75X16	1
27	85.2750.00.2	OIL FILLER CAP (before 08/2020)	1	61	63.0126.09.2	BEARING COVER	1
27	85.2750.00.2A	OIL FILLER CAP (from 09/2020)	1	62	80.2191.10.2	OIL SEAL "VI"	1
28	86.3562.05.2	SCREW M10x70 UNI5931 12.9	12	63	80.1400.00.2	RING D.35	1
29	63.0128.32.2	HEAD	3	64	86.3348.05.2	SCREW M10X35	4
30	84.3805.00.2	SCREW D.10,5x21x2	12	65	84.3760.00.2	SCHNORR WASHER 10,5x16x1	3
31	81.4573.00.2	NUT M8 UNI 5588	9	75	86.3694.65.2	SCREW M12x20 UNI5931	1
				76	82.4066.00.2	GASKET DIA.13,2x17x1 COPPER	1
<b>CUFFIA DI PROTEZIONE LATO ANT. (OPTIONAL)</b>				<b>CUFFIA DI PROTEZIONE LATO POST. (OPTIONAL)</b>			
A	31.1468.32.2	PLAIN SAFETY CONE L=135	1	A	31.1468.32.2	PLAIN SAFETY CONE L=135	1
B	/	USE STANDARD SCREW OF PUMP	4	B	/	USE STANDARD SCREW OF PUMP	3
C	/	USE SPECIAL WASHER OF PLAIN SAFETY C.	4	C	/	USE STANDARD WASHER OF PUMP	3