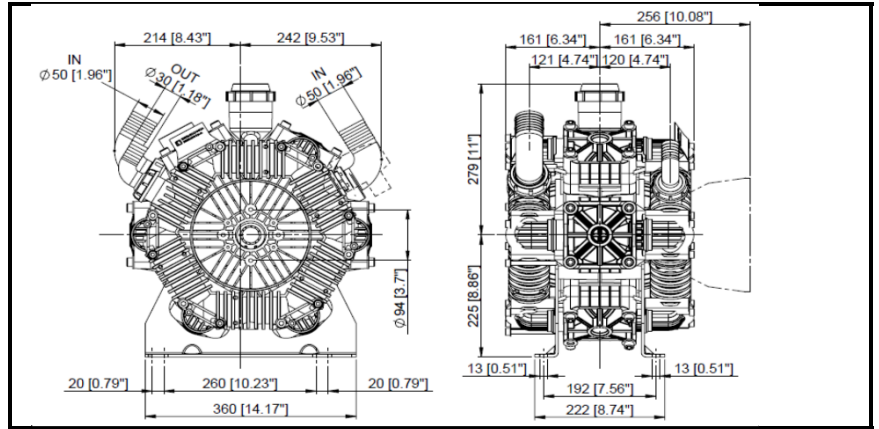
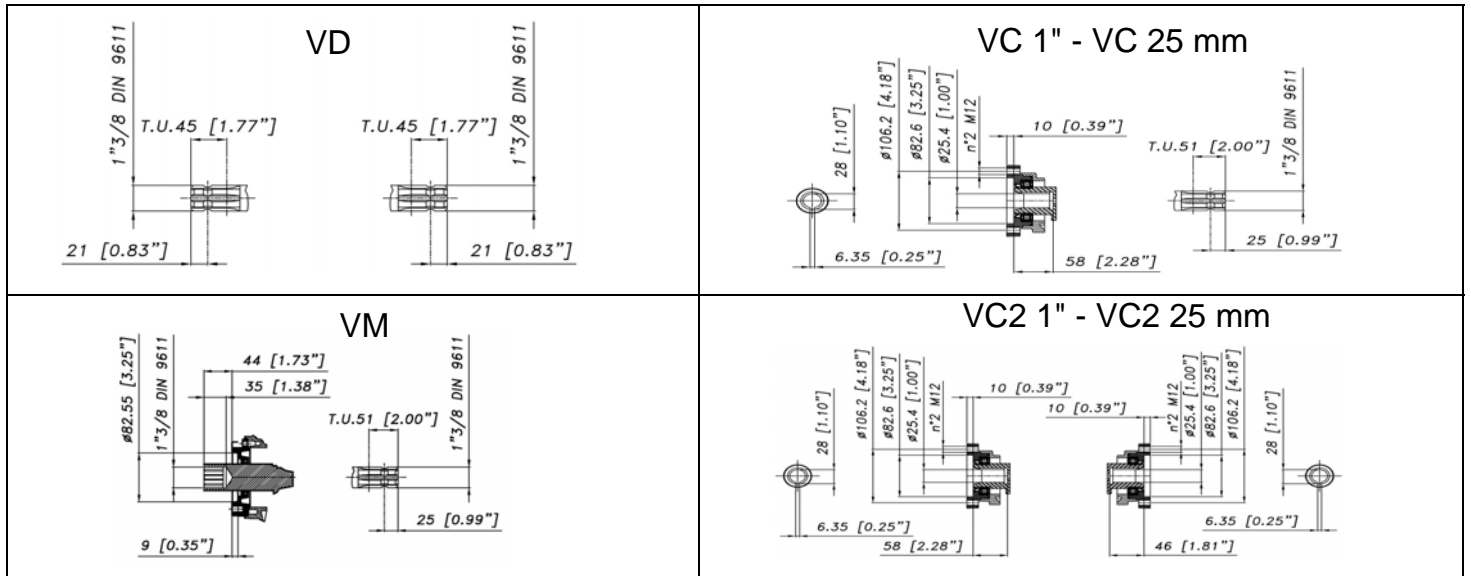




DIMENSIONI D'INGOMBRO - OVERALL DIMENSIONS



ALBERO POMPA - PUMP SHAFT



COPPIA DI SERRAGGIO - TORQUE CHART

CODICE - CODE	Q.TY	POS	N-m	Lbr.ft
62.9811.97.3	6	47	25	18,4
85.2577.00.2	1	15	5 (LOXEAL 24-18)	3,7 (LOXEAL 24-18)
86.2168.00.2	2	45	5	3,7
86.2684.00.2	4	79	22	16,3
86.3694.65.2	1	25	40	29,5
86.2562.20.2	6	32	22	16,3
86.2682.50.2	2	34	22	16,3
86.3044.05.2	24	40	15	11
86.4139.10.2	3	28	70	51,6
86.4068.50.2	24	8	40	29,5

Tolleranza di serraggio: 0/-10%
Tolerance on torque value:

**INFORMAZIONI UTILI
USEFUL INFORMATION**

LUBRIFICANTE- LUBRICANT:

OLIO MOTORE O SEMIIDRAULICO SAE 30
MOTOR OIL OR SEMI-HYDRAULIC OIL SAE 30

**PRESSIONE ACCUMULATORE
ACCUMULATOR PRESSURE**

PRESSIONE DI LAVORO - OPERATING PRESSURE	2 ÷ 5	5÷10	10 ÷ 20	20 ÷ 50
ACCUMULATORE ACCUMULATOR	/	/	/	/

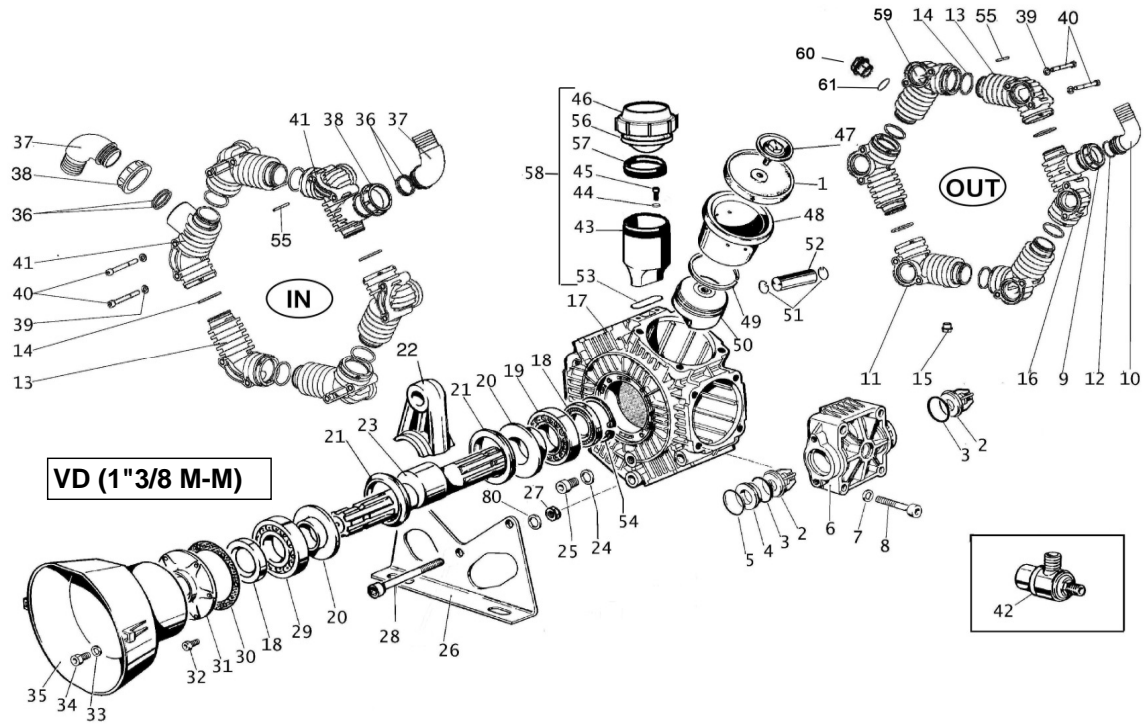
KIT MEMBRANE - DIAPHRAGMS KIT

KIT	PRE-SET DURAMAX		PRE-SET DESMOPAN		VITON				PENTAX	
	1	3	1	3	1	3	5	14	1	3
POSIZIONE ESPLOSO POSITION NUMBER	14.9878.97.3DS	14.9878.97.3	14.9878.97.3	14.9878.97.3	14.9882.97.3	14.9882.97.3	14.9882.97.3	14.9882.97.3	14.9882.97.3	14.9882.97.3
QUANTITA' NEL KIT QUANTITIES INCLUDED	6	12	6	12	6	12	6	12	6	12

KIT POMPA/KIT VALVOLE - PUMP KIT/VALVES KIT

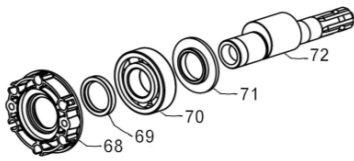
KIT	KIT POMPA VD VD PUMP KIT					KIT POMPA VC1/NM VC1/NM PUMP KIT					KIT POMPA VC2 VC2 PUMP KIT					VALVOLE 303 VALVES 303			VALVOLE 316 VALVES 316					
	18	5	14	3	30	5	14	3	30	18	69	5	14	3	30	69	74	2	3	5	2	3	5	
POSIZIONE ESPLOSO POSITION NUMBER	14.9883.97.3	14.9883.97.3	14.9884.97.3	14.9884.97.3	14.9885.97.3	14.9876.97.3	14.9876.97.3	14.9876.97.3	14.9876.97.3	14.9876.97.3	14.9876.97.3	14.9876.97.3	14.9876.97.3	14.9706.97.3	14.9706.97.3	14.9706.97.3	14.9706.97.3	14.9706.97.3	14.9706.97.3	14.9706.97.3	14.9706.97.3	14.9706.97.3	14.9706.97.3	14.9706.97.3
QUANTITA' NEL KIT QUANTITIES INCLUDED	2	6	12	12	1	6	12	12	1	1	1	6	12	12	1	1	1	6	12	12	6	12	12	6

POLY 2300 VD (1"3/8 M-M)

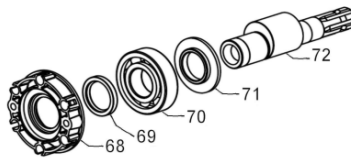


VERSIONS

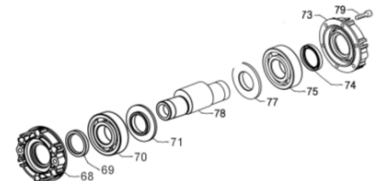
VM (1"3/8 M-F)



VC (1"3/8 - D.1" M-F) VC (1"3/8 - D.25mm M-F)



VC2 (D.1" F-F) VC2 (D.25mm F-F)



POS.	CODICE PART NO. REF.	DENOMINAZIONE - DESCRIPTION - DESCRIPTION	Q.TY	POS.	CODICE PART NO. REF.	DENOMINAZIONE - DESCRIPTION - DESCRIPTION	Q.TY
1	62.0040.00.ADS	PRE-SET DURAMAX PISTON DIAPHRAGM (STD)	6	36	80.3209.15.2	O-RING 2.62x40.95 VITON	4
1	62.0040.00.A	PRE-SET DESMOPAN PISTON DIAPHRAGM (OPT)	6	37	84.0610.00.2	90° ELBOW CONNECTOR DIA.50	2
1	62.0040.33.2	VITON PISTON DIAPHRAGM	6	37	84.1643.00.2	STRAIGHT CONNECTOR DIA.50 (OPT)	2
2	28.9905.97.3	S.S. AISI 316 VALVE ASSY (STD)	12	38	82.0120.00.2	WING NUT G.2"	2
2	28.9809.97.3	S.S. AISI 303 VALVE ASSY (OPT)	12	39	84.3697.00.2	WASHER DIA.8,4x18x2	24
3	80.3314.50.2	O-RING 4,5x40 VITON	12	40	86.3044.05.2	SCREW M8x90 UNI5931	24
4	28.0229.32.2	VALVE ASSY SPACER	6	41	14.0032.32.2	PIPE MANIFOLD G 2"	2
5	80.3209.30.2	O-RING 2.62x42,52 VITON	6	42	24.3115.97.3	SAFETY VALVE 15bar (OPT)	1
6	62.0025.32.2	HEAD	6	43	14.0117.32.2	BOWL OIL FILLER	1
7	84.3845.00.2	WASHER DIA.13x24x2,5	24	44	84.3585.00.2	WASHER D.6,4X12,5X1,6	2
8	86.4068.50.2	SCREW M12x75 UNI5931	24	45	86.2168.00.2	SCREW M6x22 UNI5931	2
9	82.0070.00.2	WING NUT G.1"1/2	1	46	28.0144.32.2	OIL FILLER CAP	1
10	84.0561.00.2	90° ELBOW CONNECTOR DIA.30	1	47	62.9811.97.3	KIT SCREW/DISK INOX	6
10	84.0566.00.2	90° ELBOW CONNECTOR DIA.32 (OPT)	1	48	62.0021.01.2	PISTON SLEEVE	6
10	84.0570.00.2	90° ELBOW CONNECTOR DIA.35 (OPT)	1	49	81.8540.00.2	PISTON RING DIA.78	6
10	84.0571.00.2	90° ELBOW CONNECTOR DIA.38 (OPT)	1	50	62.0018.09.2	PISTON DIA.78	6
10	84.0591.00.2	90° ELBOW CONNECTOR DIA.40 (OPT)	1	51	80.0021.00.2	RING DIA.15	12
11	14.0030.32.2	PIPE MANIFOLD G 3/8"	1	52	85.2006.70.2	PISTON PIN DIA.15	6
12	80.3219.15.2	O-RING 3,0x30 VITON	1	53	80.3209.00.2	O-RING 2,62x39,34	1
13	14.0029.32.2	PIPE MANIFOLD	7	54	80.1369.00.2	RING DIA.52	1
14	80.3264.50.2	O-RING 3,53x44,04 VITON	12	55	25.0606.51.2	FORK Ø4 - INT. 47	12
15	85.2577.00.2	CAP G.3/8 + OR	1	56	41.0017.31.2	DIAPHRAGM OIL FILLER	1
16	14.0031.32.2	PIPE MANIFOLD G1"1/2	1	57	14.0116.32.2	SPACER	1
17	14.0001.09.2	CRANKCASE	1	58	14.9888.97.3	OIL FILLER KIT	1
18	80.2143.10.2	OIL SEAL DIA.35x52x7	2	59	14.0042.32.2	PIPE MANIFOLD G.1	1
19	81.2867.00.2	BALL BEARING DIA.35x80x21	1	60	85.2720.00.2	CAP G.1	1
20	14.0016.01.2	SHAFT SPACER	2	61	80.3206.50.2	O-RING 2,62x28,25 VITON	1
21	14.0015.76.2	CONROD RING	2	68	14.0037.07.2	CAP "VC"	1
22	14.0027.11.2	CONROD	6	69	80.2191.10.2	OIL SEAL DIA.45x62x7 "VC"	1
23	14.0024.26.2	CRANKSHAFT POLY 2300	1	70	81.2945.00.2	BALL BEARING 6309 "VC"	1
24	82.4066.00.2	GASKET DIA.12,2x18x1,5	1	71	14.0038.61.2	CIRCLIP DIA.45 "VC"	1
25	86.3694.65.2	SCREW M12x20 UNI5931	1	72	14.0036.26.2	CRANKSHAFT "VC" D.1"	1
26	14.0018.61.2	MOUNTING RAIL	2	72	14.0036.26.2A	CRANKSHAFT "VC" D.25mm	1
27	81.4689.30.2	M12 UNI 5589 NUT	3	72	14.0039.26.2	CRANKSHAFT "VM"	1
28	86.4139.10.2	SCREW M12x160	3	73	14.0111.07.2	HYDRAULIC MOTOR FLANGE "VC2"	1
29	81.2876.00.2	BALL BEARING DIA.35x100x25	1	74	80.2178.10.2	OIL SEAL DIA.40x52x17 "VC2"	1
30	91.0110.72.2	COVER GASKET	1	75	81.2900.00.2	BALL BEARING DIA.40x80x18 "VC2"	1
31	14.0011.09.2	COVER	1	77	14.0110.61.2	SPACER "VC2"	1
32	86.2562.20.2	SCREW M8x20 UNI5931	6	78	14.0108.26.2	CRANKSHAFT "VC2" D.1"	1
33	84.3696.00.2	WASHER DIA.8,4x18x2	2	78	14.0108.26.2A	CRANKSHAFT "VC2" D.25mm	1
34	86.2682.50.2	SCREW M8x25 UNI5931	2	79	86.2684.00.2	SCREW M8x25 UNI 5931 "VC2"	4
35	31.1482.32.2	PLAIN SAFETY CONE L=182 (OPT)	1	80	84.3896.05.2	SCHNORR WASHER 13x18x1,1	3
35	31.1468.32.2	PLAIN SAFETY CONE L=135 (OPT)	1				